

A Housing Plan For You



Creating a housing plan for people with learning disabilities in Northamptonshire

www.myhomemysay.co.uk

A Housing Plan For People with a Learning Disability in Northamptonshire



An Easy Read Summary of the Learning Disability Housing Plan For Northamptonshire

17th January 2011

The Learning Disability Partnership Board has asked a group of people to work out a way of helping people with a learning disability find a home. This group are called:- **The Finding a Place to Live Group**



The group has been meeting since May 2010 to make a Housing Plan. The plan has been co-produced. Co-production is where people work along side professionals as equal partners to make something happen. So half of the group are people from the community and the other half are professionals wanting to help.

Organisations who helped

A number of people from organisations like Social Services, the 7 Housing Authorities and the voluntary sector also helped make the plan.



Why the Housing Plan is needed

This plan is needed because many people with a Learning Disability in Northamptonshire do not have the same choice about where and how they live as other people do



The Plan shows that people need more support to think about where they would like to live and help to make it happen. It also shows that Social Services and Housing Offices need to do more to help people and their families with housing matters

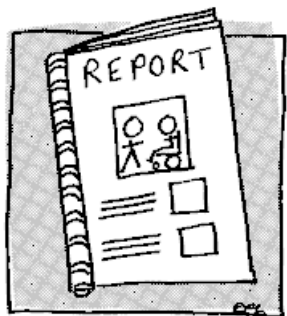
The Aims of The Housing Plan

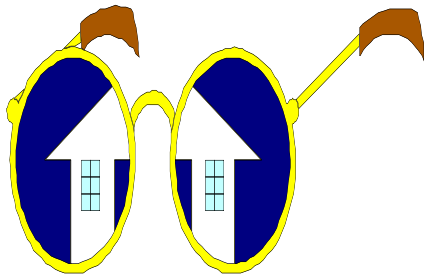
The main aim of the plan is to help people with a Learning Disability find out about the many ways of living and to help people to work together to make their housing dream real.

Giving People more Choice with Less Money

Through the plan we want to help people have more choice about where they live and this could be more difficult now as the Government has said there will be a lot less money for this.

In the Plan we have come up with some ideas that we hope will help, using things other than money, such as sharing time to help each other





Our Vision:-



We want to:-

- * have real choice and access to the same housing as other people
- * find information we understand
- * get support to meet our needs
- * lead this and understand how organisations can help, and
- * do all of this at our own pace



Things we found out by doing the Plan

(1) Where people live

We found out that most people with a Learning Disability that Social Services help live at home with families or in residential care homes. A smaller number live in the community and a very small number own their home.



(2) We also found out that people often:-

- * feel they have little choice about how they live
- * don't understand how local housing offices work or can help
- * don't get help from Social Services about housing
- * don't know about other ways of living so they can have real choice
- * find thinking about moving difficult and don't know who can help
- * have trouble finding information that is easy to understand, and
- * find it difficult to find the money they need to pay for their home



Things People Need help with

People need help with four things:-

- (1) Finding out about the many ways of living and trying these out
- (2) Understanding what housing and support they need, what it costs and how they can get help with money to pay for these
- (3) Deciding to move and making it happen
- (4) Living happily in their new home, making friends with neighbours and settling in to the local community



Outcomes - What we want to see at the end of this

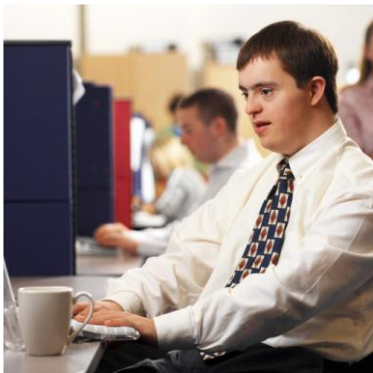
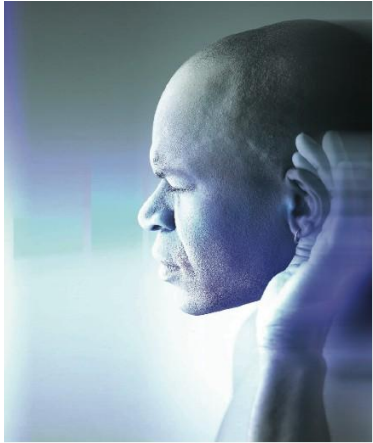
We have made a list of all the things people would like to see happening in the future. We expect to see more

- adults and young people having the chance to live in the community with support
- people feeling safer to live where they wish
- black and ethnic minority people having help to live where they wish
- older people with a learning disability living in the community with support or in the same types of homes as other people
- people living in the County if they wish rather than having to go to another county for the help they need

We also want :-

- Help to think about how we live, as often as we wish
- More young people becoming adults with a better understanding of their choices





Making this Happen - Our Action Plan

The Plan has many actions to help people with their housing needs.

(1) Setting up **the Community Housing and Support Network** to support people to help each other to find a home, settle in, and make friends

(2) Produce a guide to make sure people have the information they need about local housing options in a form that is easy to understand

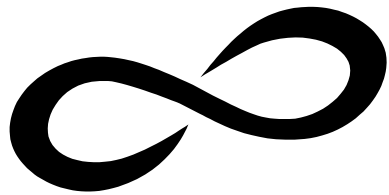
(3) Help people to try out different ways of living

(4) Help all people known to Social Services think about how and where they live and help people move if they wish

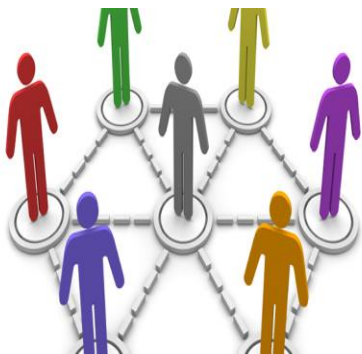
(5) Work with Local Council Housing Offices to make it easier for people to get help with their housing needs

(6) Make a guide and DVD for teachers and families to help young people at school understand and try out the many ways of living and how to find a home

(7) Create Housing and Community Connectors to help people find a home and settle in



Northamptonshire Community Housing and Support Network



(8) Find money and support to make these things happen

The Big Idea - The Community Housing and Support Network

We plan to set up an organisation called **The Community Housing and Support Network**. This will help you to think about how you would like to live and make it happen.

How It Will Work

It will be run by people joining together with other people from the community to help each other find out housing choices and try these out.

Network members may be:-

- ❖ You and your family
- ❖ people from the local community
- ❖ others people with disabilities
- ❖ people who work in a housing organisation
- ❖ people from local businesses

Anyone can be a member. Some members will want to find a home for themselves and others may just want to help some one else find a home.

When people find their new home other members will help them settle in

and make friends in their new area. These are Community Connectors.

When people have found their home we hope they will then choose to share their new knowledge with other members and start helping them to find somewhere that they would like to live.



People We Have Helped Already in Making The Housing Plan

Ashley lives in her own home and has a job in a local shop which she enjoys very much. When her boyfriend moved out she found it difficult to pay all her bills and needed help.

The group put Ashley in touch with an organisation that could help. They helped her to sort out all her money and get more money to pay her bills so that she could carry on living by herself in the home she loves



Chris was living in a house he shared with other people and he wanted to move into a place of his own.

He came to a meeting of the Group with a supporter. They were finding it difficult to find the right place for him to rent. The group was able to advise on where to go for help and Chris now has his own flat.



Michelle had moved from her parent's house to live in a flat by herself. At first she was happy there until someone else moved in next door who was not very nice to her.

Eventually she moved back home. She came to a meeting of the Group with her Dad and we were able to provide some advice. Hopefully she will soon have her own home

Making The Housing Plan Happen

The Community Housing and Support Network will do much of the work to make the housing plan happen. They will do this with the help of the Local Housing Offices and Social Services.



The Finding a Place to Live Group will also carry on finding new ways to help people find a home.

Once the Network is working it will need to make its own money to keep going. It will do this by

- Charging a Fee to help people find a home
- Members sharing their time and knowledge so they pay less for help
- Finding people to put money into the network because they like it



Starting The Network

We will need a lot of money for the first 2 years to set up the Network (£150,000). We will ask the Managers at Social Services if they will help us with half the money in the First year (£35,000).

And we think we can find money from others and ask people to share their time through a Timebank to make up the rest.

Timebanking is where people share time and their skills to help each other. For every hour of help given a person receives 1 time credit. They can then use their time credit to pay for any help they need from someone else



Our Actions in Year 1 (2011-2012)

In year 1 we aim to do 3 main things

1. Start setting up the Community Housing and Support Network to help people and families start helping themselves
2. Start finding out how we would like to live and do some work with the Local Housing Offices and Social Services so they can become better at helping us find some where to live
3. Make the tools and materials to help us better understand about housing and our choices



Before the plan starts in April 2011, we are making a guide and DVD to help Teachers and families tell young people about how and where they can live. We have started this already.

We want all the actions in this Housing Plan to be done by April 2015.

Thank You

A lot of people have helped to make this plan and we want to thank everyone very much for their help, Thank you all. We look forward to working with you again in the future to make this plan happen.

About The Housing Plan

To find out more about the Housing Plan or to join the Community Housing and Support Network please contact Marion Turner on [01604 237180](tel:01604237180) or marioturner@hotmail.co.uk or mturner@northamptonshire.gov.uk



or go to our website

www.myhomemysay.co.uk